

# Consideration of species from Ignitis Renewables perspective

Lina Žibienė

Head of Environment and Social Compliance

Ignitis Renewables



# Content

- 1 Ignitis Renewables: Who we are
- 2 Sustainable and Environmental Responsible Development
- 3 Environmental Management During Construction and Operation
- 4 Main Lessons Learned



# Ignitis Renewables: Who We Are



# Ignitis Group

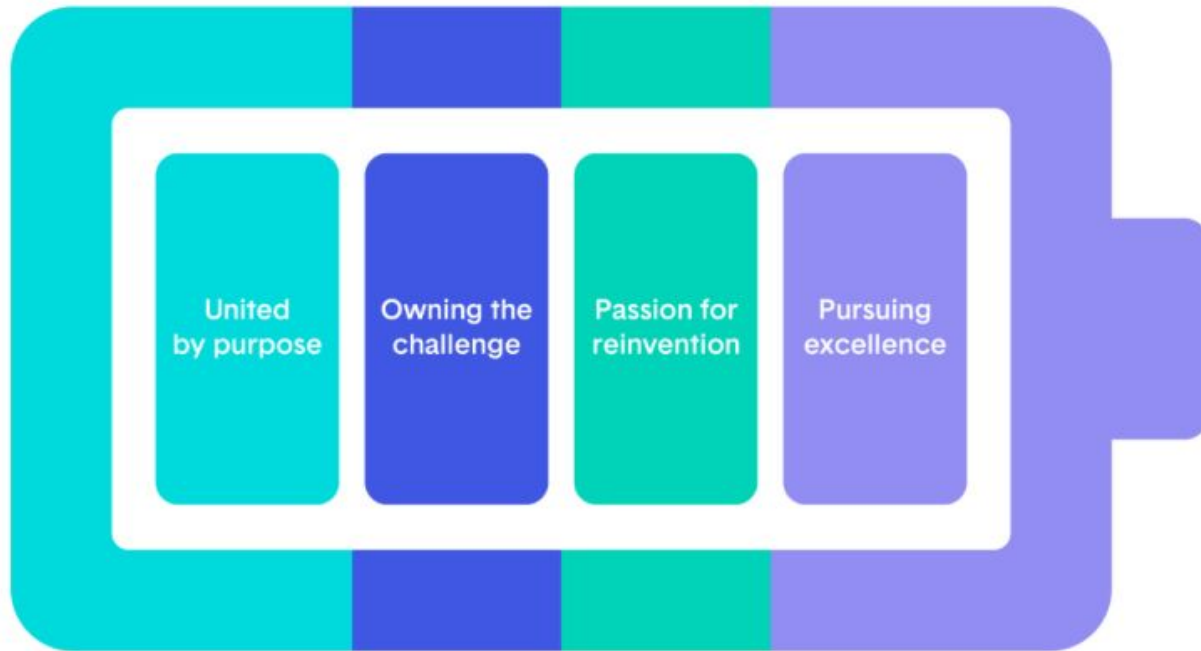
Ignitis Group is a renewables-focused integrated utility and the largest listed company in the Baltic states.

Ignitis Group company **Ignitis Renewables** is an international green energy company responsible for development, construction and operation renewables projects in the Baltics and Poland.

**Our purpose is to create a  
100% green and secure  
energy ecosystem for  
current and future  
generations.**



# Ignitis Group Mindsets



**Power to act  
comes from the  
charge we bring**

The mindsets we live by every day power our ambitious journey to a 100% green and secure energy ecosystem.

# Ignitis Renewables – Green Generation in the Baltics and Poland

We develop renewable energy projects across the Baltics and Poland, focusing on wind, solar, and energy storage.

---

**1.4 GW** Installed capacity

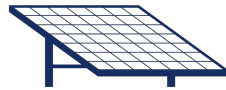
---

In operation and under construction:



**Onshore wind**

11 projects | 720 MW



**Solar**

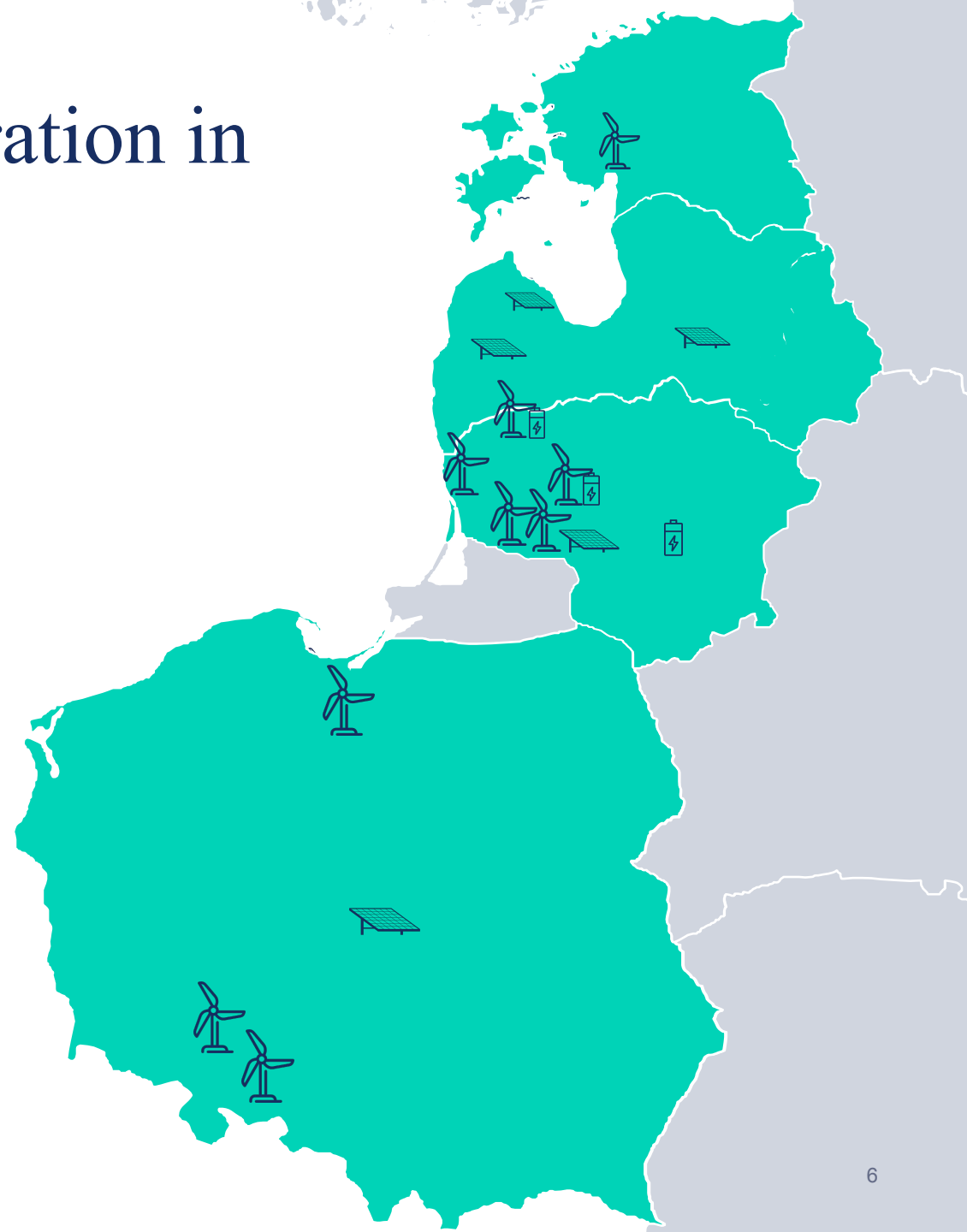
5 projects | 435 MW



**BESS**

3 projects | 291 MW

**Target: 4–5 GW installed capacity by 2030**



# Sustainable and Environmentally Responsible Development



# Renewable Energy in Harmony with Nature

Science-based approach to protect and enhance biodiversity.



## Holistic lifecycle approach

From planning to construction to operation



## Expert collaboration

Environmental specialists and scientific studies



## Biodiversity enhancement

Mitigation measures and habitat improvement

Planning



Construction



Operation

Opportunities to enhance biodiversity throughout the process.



# How Can We Achieve It?

**1** Initial  
environmental  
site  
assessment

**2** Surveys and  
monitoring  
during the  
development

**3** Clear  
and  
consistent  
regulation

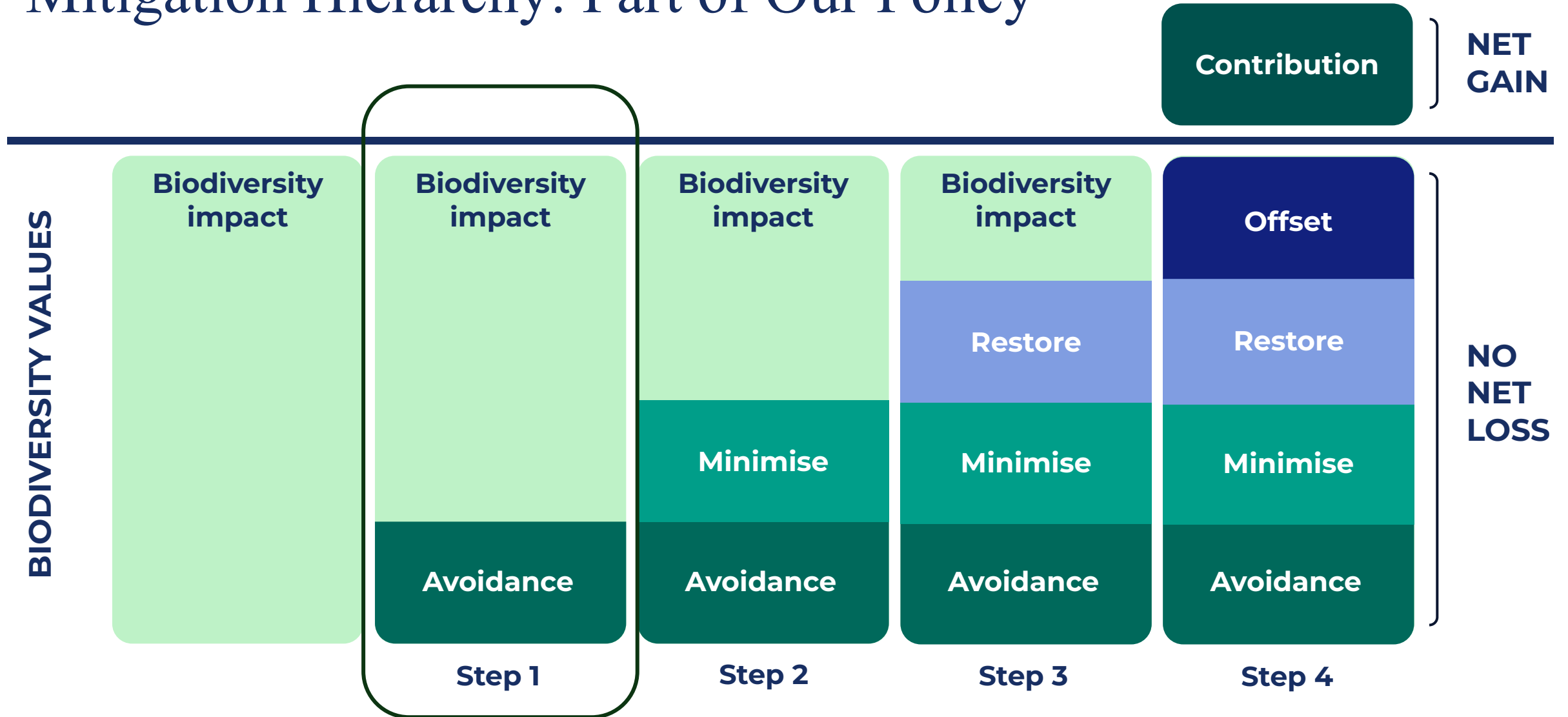
**THREE MAIN PILLARS**

# More Time Studying Nature Than Constructing WTGs



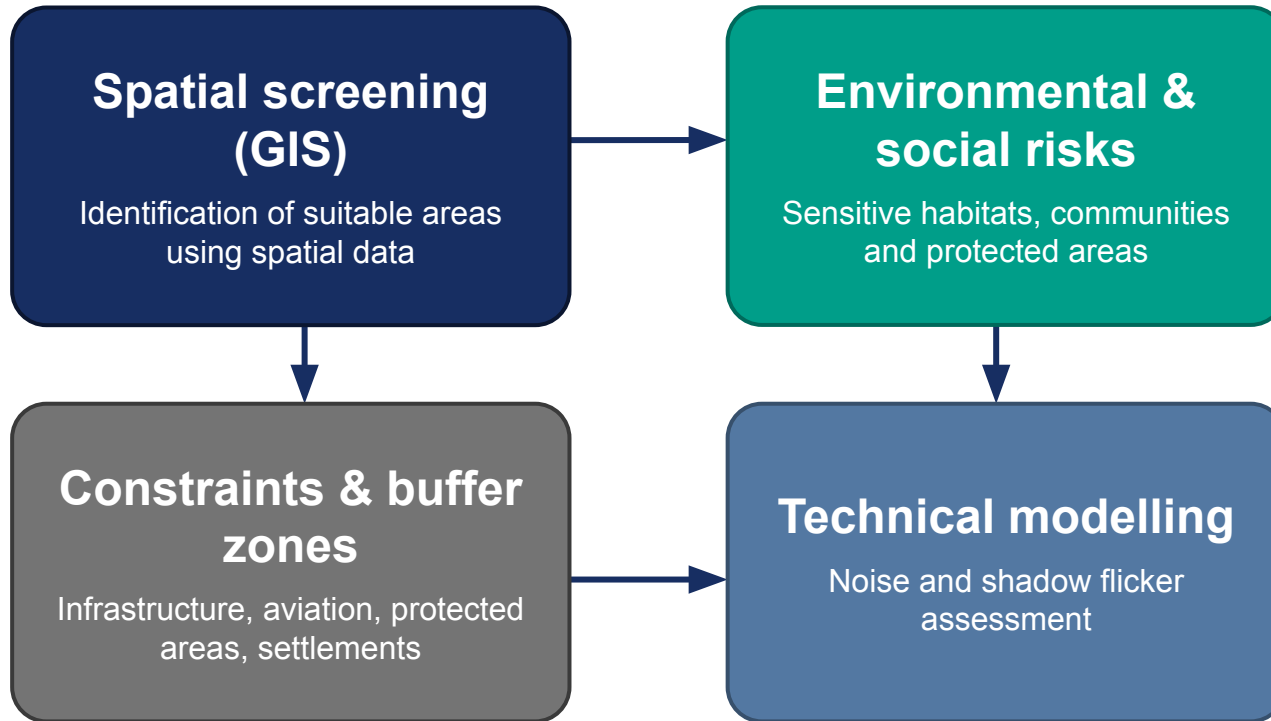
**Understanding nature comes first. Only then do we build wind farms.**

# Mitigation Hierarchy: Part of Our Policy

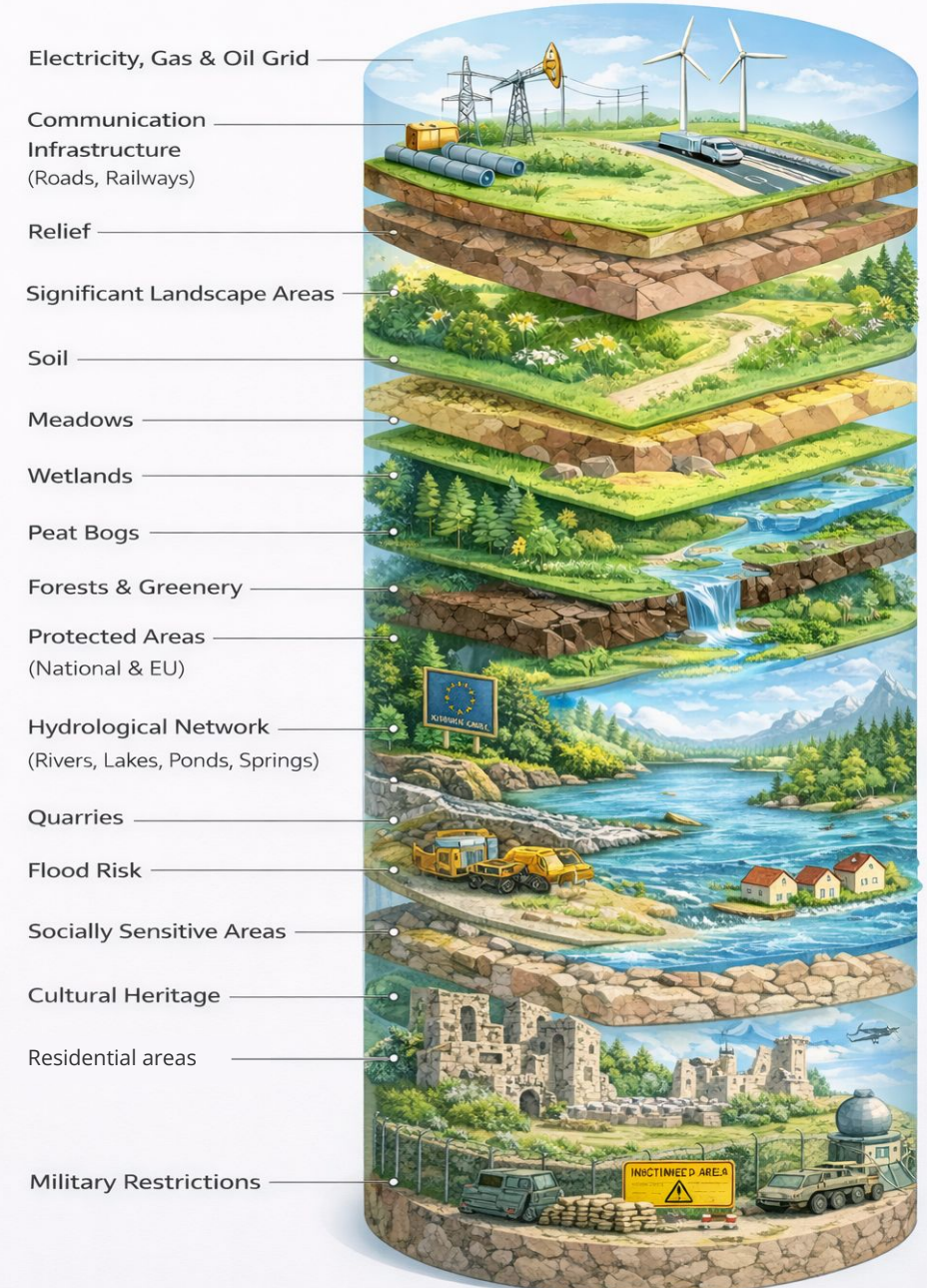


# Avoidance First: Comprehensive Site Assessment

Environmental and spatial analyses are conducted before any wind farm layout is prepared



## LAYERS OF INITIAL ASSESSMENT FOR ONSHORE WIND DEVELOPMENT



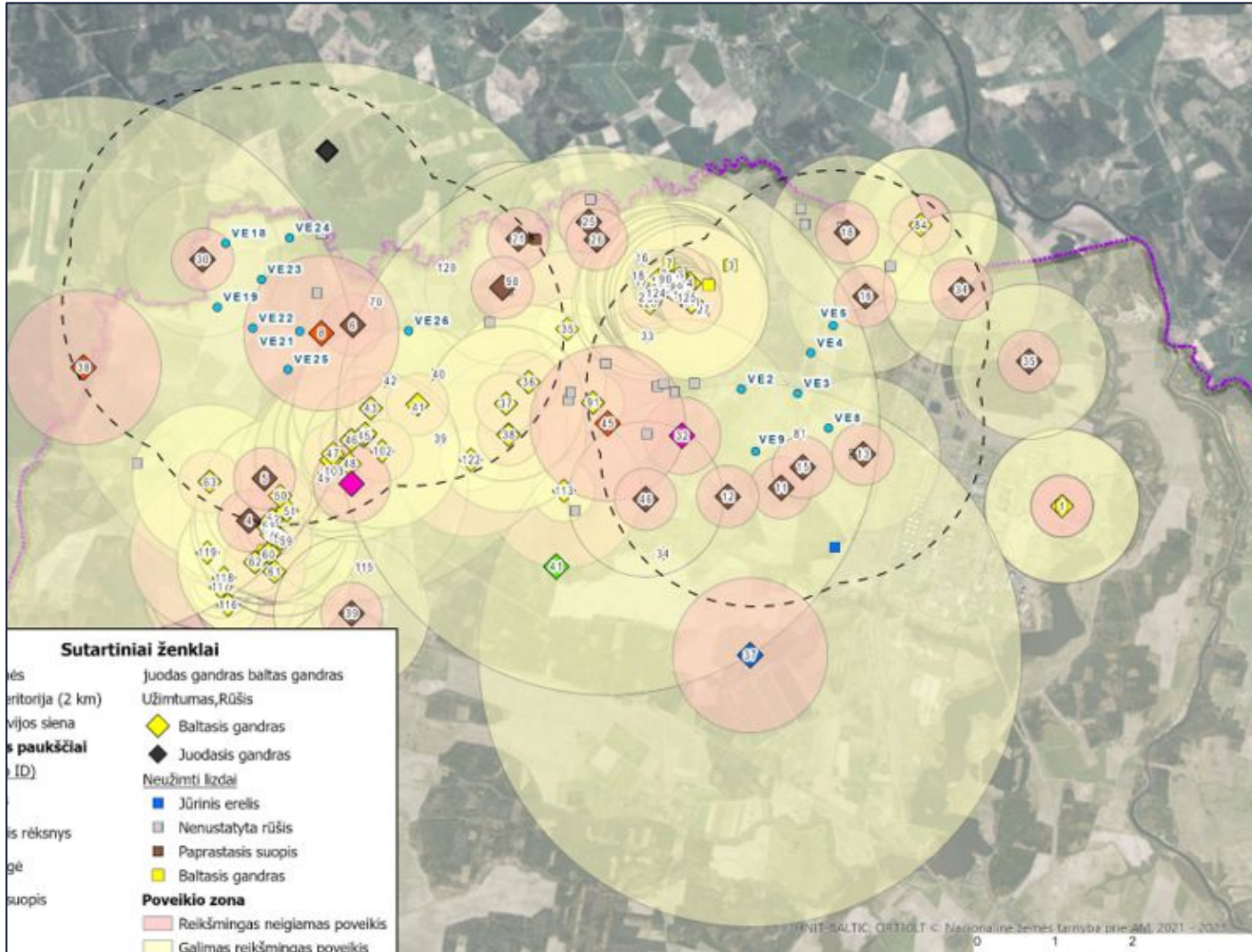
**Only sites that  
have been  
assessed and  
determined to  
present the lowest  
risk are taken  
forward to the  
next stage**

Wind energy and nature  
can coexist – when  
development starts with  
understanding.



# Biodiversity Surveys Supporting Wind Farm EIA

## Bird survey buffers and nest's locations in a planned wind farm area



### Bird and Bat Surveys

- ✓ 2 km (LT/PL) and 3 km (LV) survey radius around turbines
- ✓ Nest identification
- ✓ Migration corridor mapping
- ✓ Bat acoustic monitoring



### Environmental Impact Assessment

- ✓ Habitat screening
- ✓ Collision risk modelling
- ✓ Mitigation planning
- ✓ Social and landscape aspects
- ✓ Plants, fungus and lichen inventories (PL/LV)

# Regulation in Different Countries

✓ Micro-reserves with buffer zones for specific bird species. If WTG is planned there, compensatory measures might be applicable.

✓ No regulated buffer zones, no-go zones and distances where mitigation measures will be needed are determined by experts.

✓ Law-regulated birds and bats assessment in wind farm.

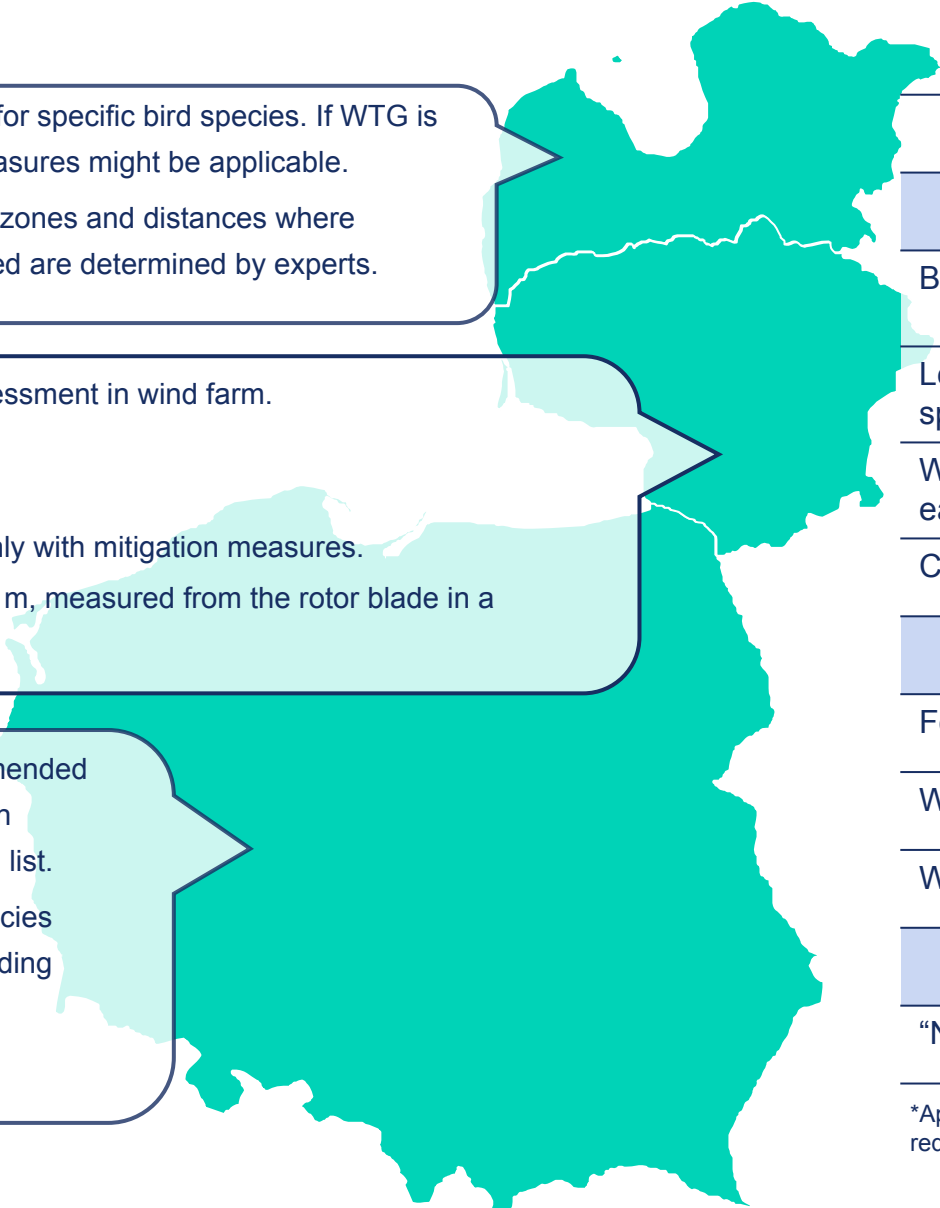
✓ Birds:

- no-go zone
- WTG can be built but only with mitigation measures.

✓ Bats: distance of no less than 200 m, measured from the rotor blade in a horizontal position.

✓ Buffer zones for birds are recommended according to Polish Bird Protection Society. 17 bird species are in the list.

✓ Seasonal protection for some species could be established (during breeding season, forest cuts etc.)



### Buffer zones, distances from the nest/ habitat, m

Black stork	1,500 (3,500)	2,000 (1,000)	200 (500)	3,000 (4,800)
Lesser spotted eagle	1,000 (3,500)	1,000–1,150 (2,000)	100 (500)	2,000
White tailed eagle	1,000 (3,500)	1,000–3,000	200 (500)	2,000
Capercaillie	-	1,000	200	1,000

### Buffer zones in different countries to protect bats, m

Forest	200	200	200	200
Waterbodies	200	200	200	200
Wetlands	200	200	200	200

### Buffer zones, could differ depending on it purpose, m

“Natura 2000”	2,000	2,000*	500	600
---------------	-------	--------	-----	-----

\*Applied only for simplified environmental impact assessment procedure and could be reduced during EIA

# New Regulation: Did It Really Solve Biodiversity Issues?

The 2024 regulation on bird and bat assessments for wind farms is currently under revision.

## Challenges for projects

- New requirements applied even to projects already in development
- Institutions demand immediate compliance

## Unexpected findings

- New monitoring revealed that some EIA approvals were too optimistic
- More sensitive species detected

## Operational consequences in late development stage

- A need to review wind turbine layouts
- Additional not planned mitigation measures are mandatory:
  - Turbine shutdowns during nesting periods
  - Use of ACS prevention systems
- Energy production

**Regulation criteria is too strict and not fully aligned with current situation and technology.**



# Environmental Management During Construction and Operation





# Environmental Supervision During Construction

Environmental supervision helps to ensure that construction activities are carried out responsibly and in line with environmental commitments.



## On-site environmental supervision

- Environmental specialists present during key construction activities.
- Supporting contractors in implementing environmental requirements.



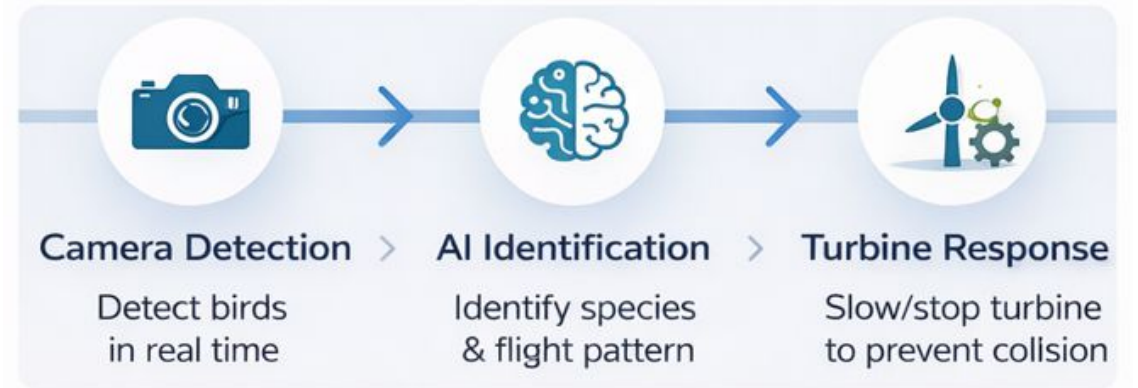
## Compliance and impact prevention

- Monitoring compliance with environmental permits and mitigation measures
- Preventing impacts on habitats, wildlife and water bodies



# Best Protection Systems in Wind Farms

## AI Bird Detection & Turbine Control



Cameras detect birds in real time.



AI analyses flight speed, path, and height.  
Turbines slow down for protected species.



Reduce collision risk.



Supports safe expansion of wind energy.

# Why Post-Construction Monitoring Matters

Ensures environmental compliance and future improvement

## VERIFY

- ✓ Confirm real impacts vs. EIA predictions.
- ✓ Demonstrate permit compliance.

## MANAGE

- ✓ Detect unexpected wildlife impacts.
- ✓ Adjust mitigation measures.

## LEARN

- ✓ Improve future project planning.
- ✓ Refine environmental restrictions.



Monitoring turns data into better environmental protection and smarter wind farm development.



# Leason Learned



# Strong Regulation and Planning Enable Sustainable Wind Farm Development

⚖️ Regulation

+

🌿 Development

- Protect wildlife and habitats
- Provide clarity for developers
- Reduce conflicts and delays

- Ecosystem understanding
- Environmental assessments
- Careful turbine placement

⚡ Sustainable wind energy expansion





**Lina Žibienė**

Head of Environmental and  
Social Compliance  
lina.zibiene@ignitis.lt  
+370 652 69737



Rahastanud Euroopa Liit  
NextGenerationEU



Eesti  
tuleviku heaks